

Certificate III Lineworker for “A” Class Licensed Electrician

E2L - An Opportunity





Presentation Includes

- **Steering Committee Members**
- **Background**
- **Current situation**
- **Opportunity**
- **Benefits**
- **Recommendations**
- **Support / Funding required**
- **Questions**



E2L Steering Committee Members

- Alex Frazer – EPIC (Chairperson)
- Graeme Watson – EEIT (Project Manager)
- David Ellis – Gipps Tafe Energy Training Centre
- Mick DeGraaff, Gipps Tafe Energy Training Centre
- Peter McKinnon, ETU
- Adam Beel - Jemena
- Pam O'Neill – Citipower/Powercor
- Gerard Cooke – SP-AusNet



Background

- Current and on-going shortage of Lineworkers in Australia.

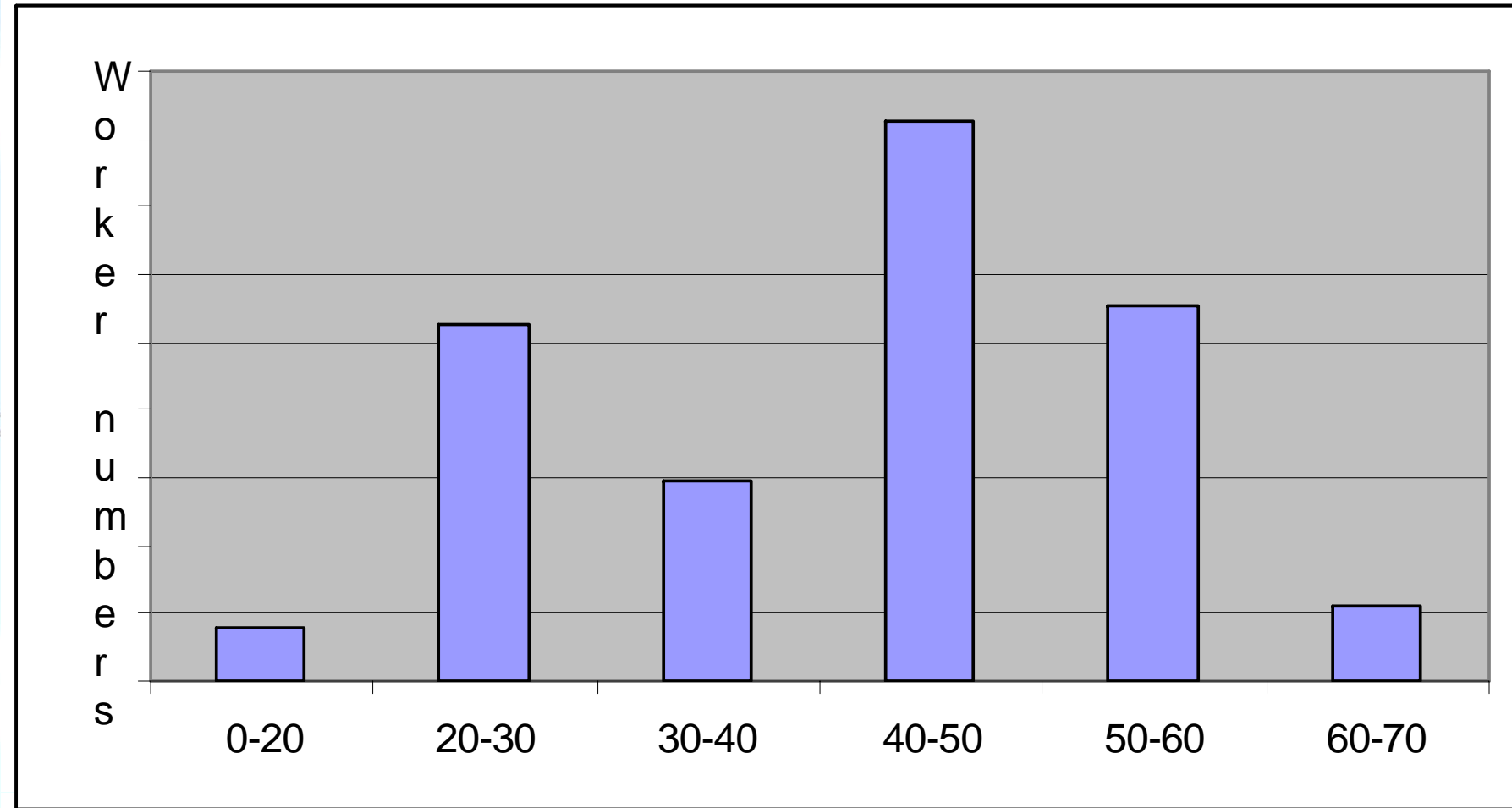
In 2006 the Industry Skills Council stated....

*“There is a strong likelihood by 2009/2010 of a critical skill shortage in the skilled tradesperson category occurring across the industry if recruitment is maintained at current levels.”**

“....Whilst overseas recruitment has traditionally assisted in meeting skills shortage, it has become evident that there are similar skills shortfalls globally”.

*EEOZ Analysis of Skills Requirements of the Energy Utilities Industry
Under the Strategic Intervention Programme 2006

Typical age profile ESI Technical Employees Victoria 2010





2009 industry based analysis indicates:

- In 5 - 10 years large numbers of the existing workforce will be eligible to retire
- Changes to Superannuation Legislation
- Recognition of the need for technical people to move to roles within the business other than their original trade
- Increase in the works program
- Capital replacement programs
- Large capital infrastructure projects
- Advanced Metering rollout

A utility pole with power lines against a blue sky with clouds. The pole is the central focus, with several power lines extending from it. The sky is a clear blue with some light, wispy clouds. The overall scene is bright and clear.

Current Situation

- Young apprentices or Adult apprentices trained to Certificate III Lineworker level over 4 years
- The availability of qualified lineworkers is exceeded by industry requirements for labour
- Demand for alternative training pathways is increasing



The E2L Initiative

- A 2 years training program that allows qualified and licensed electrical workers to complete a transition program to Certificate III Lineworker.
- Implement an accelerated program to supplement the current and pending skill shortages
- Continue with 4 year apprentice and Adult apprenticeship program on top of the E2L program
- Victoria to take the National lead in meeting the challenge of skilling to cover critical shortage

E2L Training Plan

1 st 18 weeks	18 to 30 weeks	OPTION to then work in metering and servicing	30 to 60 weeks	60 to 80 weeks	80 to 100 weeks
<ul style="list-style-type: none"> • 6 weeks training • 12 weeks OJT 	<ul style="list-style-type: none"> • 10 weeks OJT 		<ul style="list-style-type: none"> • 6 weeks training • 20 weeks OJT 	<ul style="list-style-type: none"> • 10 weeks OJT 	<ul style="list-style-type: none"> • 1 weeks training • 37 weeks OJT
Allowable duties after assessment	Allowable duties after assessment		Allowable duties (no assessments)	Allowable duties after assessment	Allowable duties (no assessments)
<ul style="list-style-type: none"> • Ground assistant • Working on EAP & de-energised • Cannot be safety observer 	<ul style="list-style-type: none"> • Metering live • Servicing live • PL maintenance <p>Note: Construction work only permitted dead. (ALL above working as 3rd person in crew)</p>		<ul style="list-style-type: none"> • No change 	<ul style="list-style-type: none"> • Live LV bridging • Live LV maintenance (including cross arm and pole replacement) <p>Note: Under direct supervision while working on live LV.</p>	<ul style="list-style-type: none"> • No change

A utility pole with power lines against a blue sky with clouds. The pole is the central focus, with several power lines extending from it. The sky is a clear blue with some light, wispy clouds. The overall image has a slightly faded or semi-transparent appearance, allowing the text to be clearly visible over it.

Benefits

- Maintains consistency within current industry competency based qualifications
- Commencing in 2010
- Scalable depending on demand for the E2L program.



Summary

- \$50,000 from Skills Victoria via EPIC ITB for the creation & management of the E2L project
- Creation of a training program that leads to an alternative pathway into the lineworker trade for workers who are currently qualified as electricians
- Subsidised training from Skills Victoria – in line with current funding arrangements
- Maintaining integrity of system within the national grid
- Meeting industry shortfall of skilled staff
- Consistency of approach by training staff to a National Standard

Next Steps

- Expressions of Interest in the E2L program to:
- Graeme Watson at EEIT by **28th May 2010**
- Contact details
 - PO Box 362
 - Carlton South Vic 3053
 - Graeme.eeit@bigpond.com
- Further information
 - <http://www.epicitb.com/>
 - <http://www.vesi.com.au/>
 - <http://www.eeit.org.au/>

FAQ's

- What level of supervision does the company need to apply to the mature age apprentice?
- Do they need a mentor?
- Does this attract the incentives?
- What is the expected start date?
- What is the RPL process?
- Is there an order of priority if a large number of people apply?
- What sort of on-job experience do they need?
- Is there a standard list of competencies?